

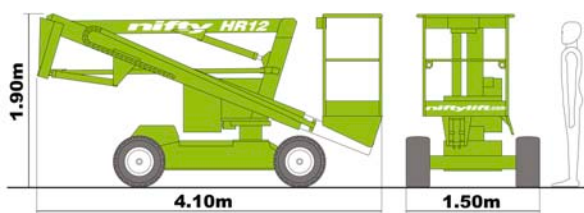
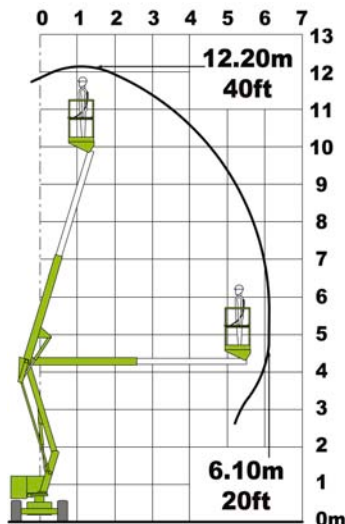
HR12 Self-propelled Boom (Cherry Picker)

The **HR12 Self-propelled Boom** (Cherry Picker) is one of the most versatile and reliable machines in its class. It is specifically designed to give maximum reach performance from the lightest, most compact base possible. A telescopic upper boom gives improved accuracy when positioning the platform and its superb manoeuvrability makes it an ideal tool for a wide range of applications.



Features

- Working Height: 12.20m (40ft)
- Working Outreach: 6.10m (20ft)
- Platform Height: 10.20m (33ft 6ins)
- Platform Size: 1.10m x 0.65m (3ft 7ins x 2ft 2ins)
- Machine Height: 1.90m (6ft 3ins)
- Machine Length: 4.10m (33ft 5ins)
- Machine Width: 1.80m (5ft 11ins –Standard) 1.50m (4ft 11ins – Narrow)
- Telescopic Upper Boom – enabling accuracy when positioning platform
- Chassis: 1.50m (4ft 11ins) - improved narrow aisle access
- Weight only 3,060kg (6,750lbs)
- Travel Speed: 3.4kph (2.1mph)
- Grade-ability: 25% - 14 degrees
- Turning Radius: 4.20m (13ft 9ins)
- Safe Working Load: 200kg (440lbs)
- Fully Proportional Hydraulic Controls – simple, reliable and easy to maintain
- Power Options: Diesel, Bi-Energy, Electric



This product is available with the CE mark confirming compliance with all relevant European Machinery Directives